

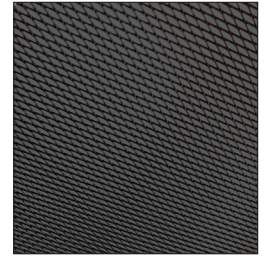


DecoMesh

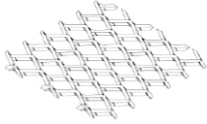
Use Zentia's DecoMesh to achieve an industrial and contemporary look. Installed on Gridline 15 and Gridline 24 suspension systems, DecoMesh is an ideal choice for transport hubs, renovation projects wanting a modern touch and in general spaces with large ceiling areas.

Key Features

- // Contemporary design aesthetic
 - // Available as Board and Tegular edge detail
 - // Compatible with standard grid systems
 - // Six mesh patterns offering a range of design and effect options
 - // Available in a range of colours
- // Suitable for transport hubs, office areas and large lobby areas etc.



Mesh Patterns



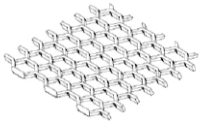
RB25
 Long diagonal: 16mm
 Short diagonal: 8mm
 Open area: 50%



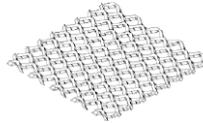
RB35
 Long diagonal: 28mm
 Short diagonal: 10mm
 Open area: 58%



KD100
 Long diagonal: 6mm
 Short diagonal: 4.5mm
 Open area: 36%



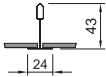
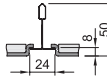
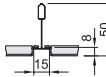
E15
 Long diagonal: 15mm
 Short diagonal: 6.5mm
 Open area: 45%



R10
 Long diagonal: 10mm
 Short diagonal: 5.8mm
 Open area: 45%



R28
 Long diagonal: 28mm
 Short diagonal: 14mm
 Open area: 74%

Edge Detail	Board	Tegular24	Tegular15
			
Modules (mm)	<p>RB25 600 x 600 MRB25B66 1200 x 600 MRB25B126</p> <p>RB35 600 x 600 MRB35B66 1200 x 600 MRB35B126</p> <p>KD100 600 x 600 MKD100B66 1200 x 600 MKD100B126</p> <p>E15 600 x 600 ME15B66 1200 x 600 ME15B126</p> <p>R10 600 x 600 MR10B66 1200 x 600 MR10B126</p> <p>R28 600 x 600 MR28B66 1200 x 600 MR28B126</p>	<p>RB25 600 x 600 MRB25T66</p> <p>KD100 600 x 600 MKD100T66</p> <p>R10 600 x 600 MR10T66</p>	<p>RB25 600 x 600 MRB25M66</p> <p>KD100 600 x 600 MKD100M66</p> <p>R10 600 x 600 MR10M66</p>
Suspension Systems	Gridline 24 Butt Cut / Joggled	Gridline 24 Butt Cut / Joggled	Gridline 15 Butt Cut / Joggled

Sustainability



48



A+



EN 13964 / E1

Fire Reaction



Euroclass A2-s1, d0
EN 13501-1

Performances & Features



95% RH



RB25: 3.95kg/m² E15: 3.15kg/m²
RB35: 4.80kg/m² R10: 3.90kg/m²
KD100: 4.15kg/m² R28: 3.40kg/m²



Custom Options

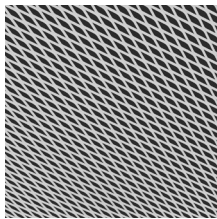


Dimensions

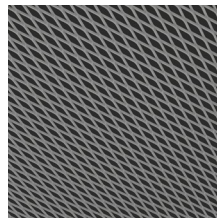


Colours

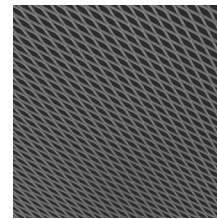
Standard Colours (RAL)



White (9003)



Aluminium (9006)

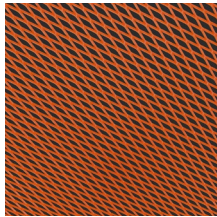


Grey (9007)

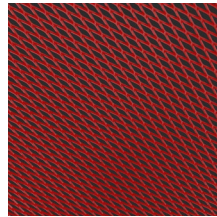


Black (9005)

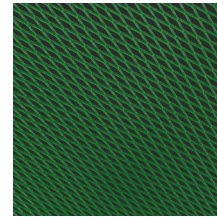
Non-standard Colours (RAL)



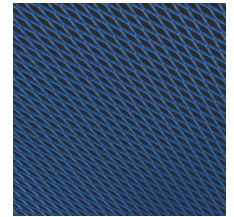
Orange (2003)



Red (3020)



Green (6037)



Blue (5015)

Accessories

Hold down clip | BPOCHC

If you would like to order a sample or have any queries about this product please contact our Technical Sales Team on **0800 371 849** or email enquiries@zentia.com

TDS 069.3.11.24